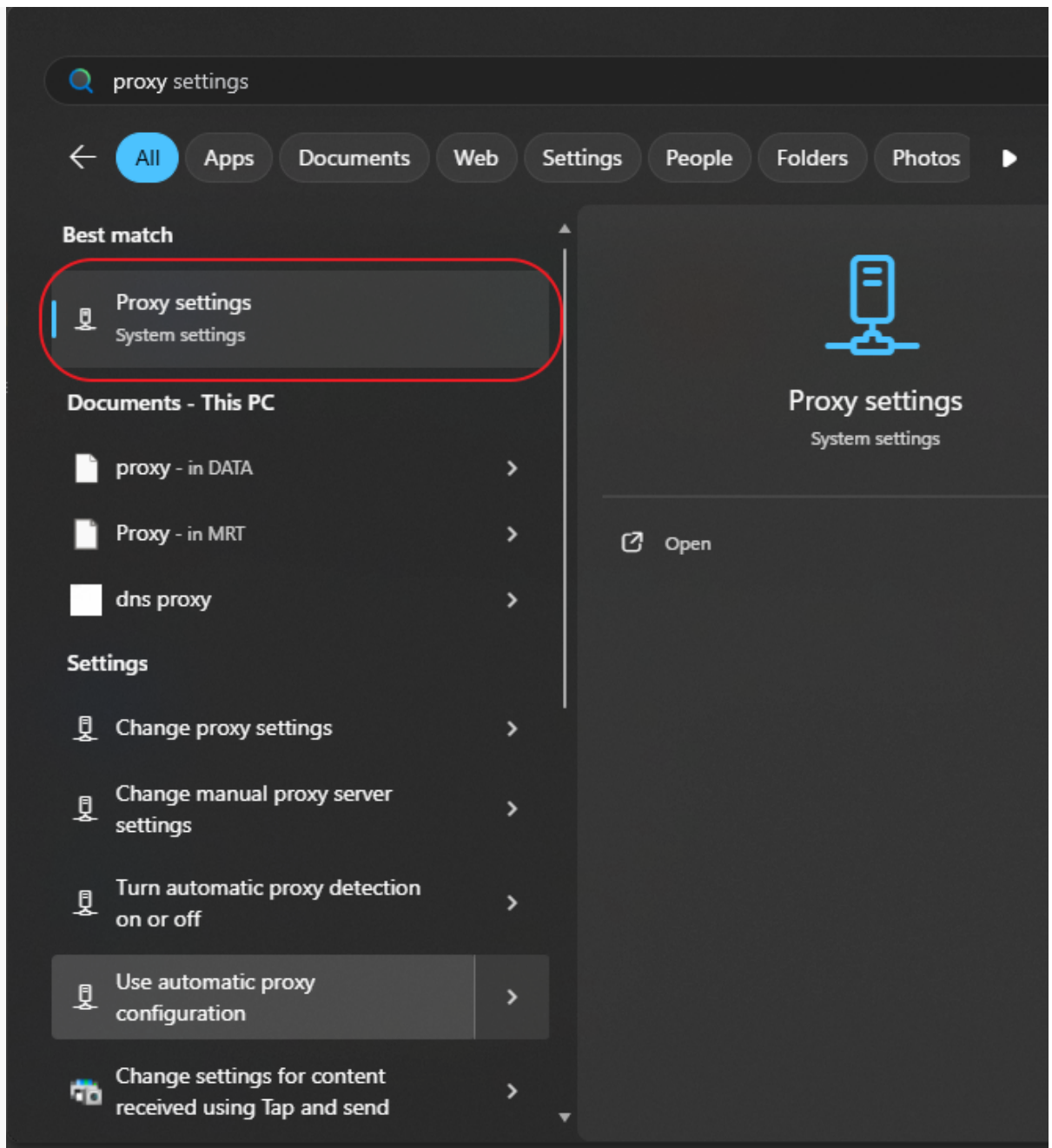
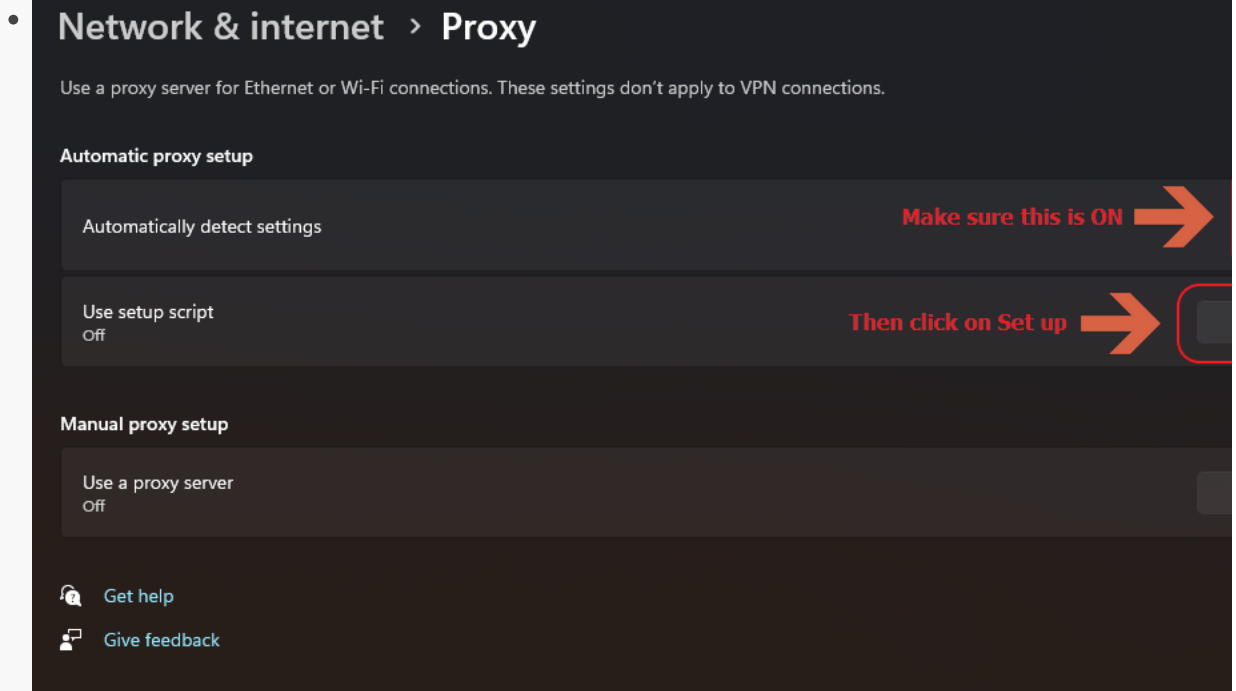


Proxy setting for UoM internal devices step by step guide

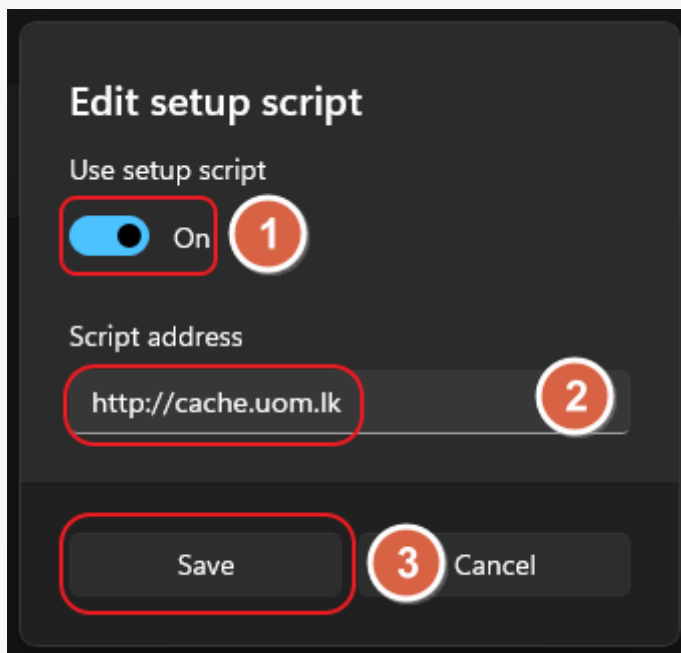
- Open Start Menu and search for "Proxy settings" and open it.



- Beforehand, remove existing proxy settings if you have any. Then turn on "Automatically detect settings" then click on "Set up".



- Turn on "Use setup script" and enter `http://cache.uom.lk` as the script address, and click save.



- Open up your favorite browser, **make sure your browser proxy settings are not altered**, do a google search for "what is my IP address" click on the first link. or visit <https://whatismyipaddress.com/> you should see at

least one of the below addresses.

- My IP Address is:

IPv4: ? 192.248.8.114

IPv6: ? 2401:dd00:10:3fff::114

**you should see at least
one of the addresses**

Revision #6

Created 7 November 2025 06:37:01 by Pasan

Updated 11 December 2025 09:16:49 by Pasan