

Option 2. Overseas Webmail access via VPN

Open a ticket on <https://helpdesk.uom.lk/> before following these instructions. mentioning your requirement.

To access the UoM Email service from other countries, you can use our VPN service. To set up the VPN account, please follow the below instructions.

Step 01: Download and install the [SoftEther VPN Client from the Download Center](#).

Select Software

Select Component

Select Platform

Select CPU

Download Files (80)

- Note: The following program uses the network functions of the operating system because this is VPN software.
Some anti-virus software or firewalls warn that such behavior might be dangerous.
If your anti-virus disturbs the VPN function, add the VPN program file or the installer to the exception list.

SoftEther VPN Client (Ver 4.39, Build 9772, beta)

[softether-vpnclient-v4.39-9772-beta-2022.04.26-windows-x86_x64-intel.exe \(53.37 MB\)](#)

[Non-SSL (HTTP) Download Link] Try this if the above link fails because your HTTP client doesn't support TLS 1.2.

Release Date: 2022-04-26 <Latest Build>

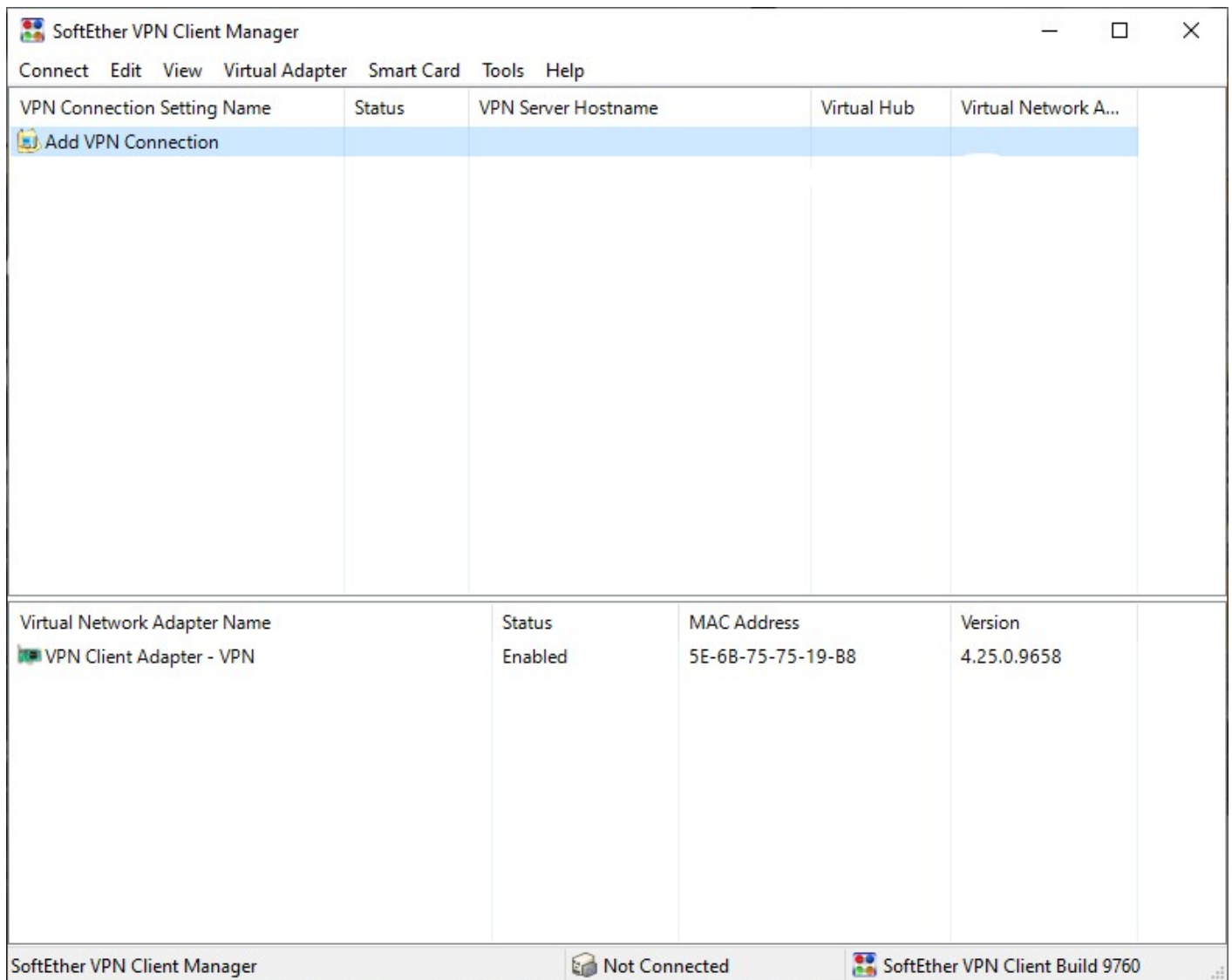
[What's new \(ChangeLog\)](#)

Languages: English, Japanese, Simplified Chinese

OS: Windows, CPU: Intel (x86 and x64)


(Windows 98 / 98 SE / ME / NT 4.0 SP6a / 2000 SP4 / XP SP2, SP3 / Vista SP1, SP2 / 7 SP1 / 8 / 8.1 / 10 / Server 2003 SP2 / Server 2008 SP1, SP2 / Hyper-V Server 2008 / Server 2008 R2 SP1 / Hyper-V Server 2008 R2 / Server 2012 / Hyper-V Server 2012 / Server 2012 R2 / Hyper-V Server 2012 R2 / Server 2016 / Server 2019)

Step 02: Click on Add VPN Connection



Step 03: Change Settings according to the below image.

New VPN Connection Setting Properties




Please configure the VPN Connection Setting for VPN Server.

Setting Name:

Mail Access(You can give any name)

Destination VPN Server:



Specify the host name or IP address, and the port number and the Virtual Hub on the destination VPN Server.

Host Name:

remote-access.uom.lk

Port Number:


443 (HTTPS Port)

☐ Disable NAT-T

Virtual Hub Name:

VPN

Proxy Server as Relay:



You can connect to a VPN Server via a proxy server.


Import IE Proxy Server Settings

Proxy Type:

☒ Direct TCP/IP Connection (No Proxy)
☐ Connect via HTTP Proxy Server
☐ Connect via SOCKS Proxy Server

Proxy Server Setting

Server Certificate Verification Option:



☐ Always Verify Server Certificate

Manage Trusted CA Certificate List

Specify Individual Cert

Show Individual Cert

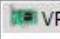
☐ Hide Status and Errors Screens

☐ Hide IP Address Screens

OK


Cancel

Virtual Network Adapter to Use:



VPN Client Adapter - VPN

User Authentication Setting:



Set the user authentication information that is required when connecting to the VPN Server.

Auth Type:

RADIUS or NT Domain Authentication


User Name:

Your UoM Username

Password:

••••••••

Advanced Setting of Communication:



☒ Reconnects Automatically After Disconnected

Reconnect Count:

times

Reconnect Interval:

15

seconds

☒ Infinite Reconnects (Keep VPN Always Online)

☐ Use SSL 3.0 (1)

Advanced Settings...

Step 04: Once you connect to the VPN, you can access your desired UoM service.

Revision #5

Created 5 February 2025 07:10:56 by Pasan

Updated 4 March 2025 09:03:34 by Pasan