

# Overseas Webmail Access

Guide to access UoM Webmail from outside Sri Lanka.

- [Option 1. Accessing UoM Webmail from overseas \(Recommended Option\)](#)
- [Option 2. Overseas Webmail access via VPN](#)

# Option 1. Accessing UoM Webmail from overseas (Recommended Option)

UoM webmail can be accessed from outside Sri Lanka via a secure email portal located at <https://securemail.uom.lk/>

You will be prompted to enter your UoM user name and password as shown below. (if your UoM email is [cites@uom.lk](mailto:cites@uom.lk), your user id is *cites*)



## Overseas UoM Webmail Access

Upon successful authentication, the following screen will appear requesting you to enter your **Sri Lankan mobile phone number** which is recorded in UoM systems.

The number will appear partially completed with last three digits to be filled in by the user.

**If the mobile phone number recorded in the system is inaccurate, please inform through your head of the department or the administrative head to [cites@uom.lk](mailto:cites@uom.lk) so that the number could be updated in the system.**



Enter your Mobile Number

(Sri Lankan Numbers only)

07

SEND OTP

After entering the mobile phone number, click "SEND OTP" to receive a one-time password. Please note that you need to have SMS roaming facility enabled to receive this OTP when you are overseas.



Verify your account details

Please enter the OTP sent to [REDACTED]

VERIFY OTP

Enter the OTP received and click "VERIFY OTP". Upon successful verification, the UoM webmail portal will appear.

If there are any issues, please open a ticket at [helpdesk.uom.lk](https://helpdesk.uom.lk) to get help.

# Option 2. Overseas Webmail access via VPN

Open a ticket on <https://helpdesk.uom.lk/> before following these instructions. mentioning your requirement.

To access the UoM Email service from other countries, you can use our VPN service. To set up the VPN account, please follow the below instructions.

**Step 01: Download and install the [SoftEther VPN Client from the Download Center](#).**

## Select Software

## Select Component

## Select Platform

## Select CPU

## Download Files (80)

- Note: The following program uses the network functions of the operating system because this is VPN software.  
Some anti-virus software or firewalls warn that such behavior might be dangerous.  
If your anti-virus disturbs the VPN function, add the VPN program file or the installer to the exception list.

### SoftEther VPN Client (Ver 4.39, Build 9772, beta)

[softether-vpnclient-v4.39-9772-beta-2022.04.26-windows-x86\\_x64-intel.exe \(53.37 MB\)](#)

[Non-SSL (HTTP) Download Link] Try this if the above link fails because your HTTP client doesn't support TLS 1.2.

Release Date: 2022-04-26 <Latest Build>

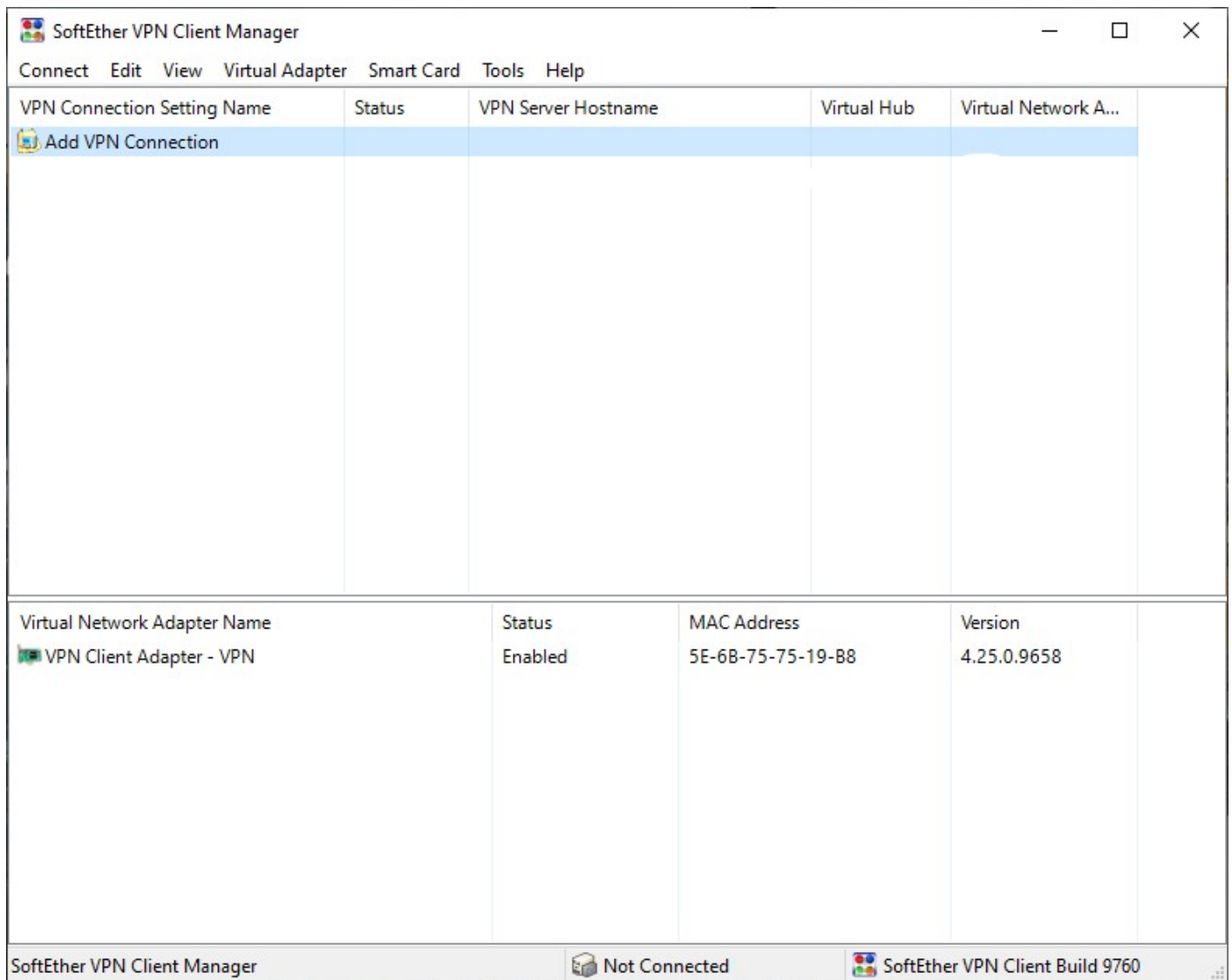
[What's new \(ChangeLog\)](#)

Languages: English, Japanese, Simplified Chinese

OS: Windows, CPU: Intel (x86 and x64)

(Windows 98 / 98 SE / ME / NT 4.0 SP6a / 2000 SP4 / XP SP2, SP3 / Vista SP1, SP2 / 7 SP1 / 8 / 8.1 / 10 / Server 2003 SP2 / Server 2008 SP1, SP2 / Hyper-V Server 2008 / Server 2008 R2 SP1 / Hyper-V Server 2008 R2 / Server 2012 / Hyper-V Server 2012 / Server 2012 R2 / Hyper-V Server 2012 R2 / Server 2016 / Server 2019)

## Step 02: Click on Add VPN Connection



**Step 03: Change Settings according to the below image.**



## New VPN Connection Setting Properties



Please configure the VPN Connection Setting for VPN Server.

Setting Name: Mail Access(You can give any name)

### Destination VPN Server:



Specify the host name or IP address, and the port number and the Virtual Hub on the destination VPN Server.

Host Name: remote-access.uom.lk

Port Number: 443 (HTTPS Port) ☐ Disable NAT-T

Virtual Hub Name: VPN

### Proxy Server as Relay:



You can connect to a VPN Server via a proxy server.

Import IE Proxy Server Settings

Proxy Type: ☒ Direct TCP/IP Connection (No Proxy)  
☐ Connect via HTTP Proxy Server  
☐ Connect via SOCKS Proxy Server

Proxy Server Setting

### Server Certificate Verification Option:



☐ Always Verify Server Certificate

Manage Trusted CA Certificate List

Specify Individual Cert

Show Individual Cert

☐ Hide Status and Errors Screens

☐ Hide IP Address Screens

### Virtual Network Adapter to Use:

VPN Client Adapter - VPN

### User Authentication Setting:



Set the user authentication information that is required when connecting to the VPN Server.

Auth Type: RADIUS or NT Domain Authentication

User Name: Your UoM Username

Password: .....

### Advanced Setting of Communication:



☒ Reconnects Automatically After Disconnected

Reconnect Count: times

Reconnect Interval: 15 seconds

☒ Infinite Reconnects (Keep VPN Always Online)

☐ Use SSL 3.0 (1)

Advanced Settings...

OK

Cancel

**Step 04:** Once you connect to the VPN, you can access your desired UoM service.